



"AN OUNCE OF PREVENTION IS WORTH A POUND OF CURE"

+1(239)264-9439 - info@stella-systems.com - www.stella-systems.com

WHO WE ARE

We are a stone touch ups and waterproofing professional team specialize in restoring and maintaining all exterior hard surfaces on residential homes and commercial buildings.

As well as preparing and waterproofing balconies, elevated pools, windows and doors.

OUR PROMISE

Our highly trained staff work each project with utmost care and take pride that our results will last for years to come.

Our goal is not only to restore stone to it's original look, but to also educate our customers on ways to keep exterior surfaces protected and maintained against all elements present in Florida.

ISSUES WE SOLVE

- Leaks
- Efflorescence
- Rust
- Damaged Stone
- Mold and Mildew
- Stains
- Weed Growth
- Precast Discoloration
- Grout issues
- Caulking Issues
- Stucco Cracking
- Thin-set Issues
- Installation Issues
- Correcting Surfaces Finishes
- Sealer Was Not Applied Correctly

ISSUES DEFINITIONS

LEAK:

- According to ASTM D7053-17, water leakage is the passage of (liquid) water through a material or system designed to prevent passage of water.
- A leak is a way (usually an opening) for fluid to escape a container or fluid-containing system.
- The term 'leak' refers to the accidentally loss or admission of something through a hole, crack, or some other permeability.

EFFLORESCENCE:

- MIA (MASONRY INSTITUE OF AMERICA) We know that efflorescence is a fine, white, powdery deposit of water-soluble salts left on the surface of masonry as the water evaporates.
- Efflorescence is a crystalline deposit, usually white, that may develop on the surfaces of masonry construction.
- Efflorescence is the migration of a salt to the surface of a porous material, where it forms a coating.
- The essential process involves the dissolving of an internally held salt in water, or occasionally in another solvent.
- The water, with the salt now held in solution, migrates to the surface, then evaporates, leaving a coating of the salt.

MOLD AND MILDEW:

Is a type of fungus that finds its food, and ability to grow, directly from its surroundings. It can come in a variety of colors, ranging from black to white to orange and green.

RUST:

Is an iron oxide, a usually red oxide formed by the redox reaction of iron and oxygen in the presence of water or air moisture. Sodium accelerate the rust process.

EXTERNAL EFFECTS:

- Steel screws used to fastener products into the exterior wall of a house such as lights, railing, gutters, pool cages, addresses and art works.
- Plantations: such as tree leaf, flowers, seeds all make stains.
- Machines and trucks leak oil on driveways.

WEATHER:

- Florida sun is super-hot and fade away stone colors especially gray.
- Florida has a lot of salt from ocean and irrigation water.
- Rain water create very suitable conditions for mold and mildew growth.

AN OUNCE OF PREVENTION IS WORTH A POUND OF CURE

+1(239)264-9439 - info@stella-systems.com - www.stella-systems.com

AREAS WE SERVICE



Roofs



Windows & Doors



Balconies & Elevated Pools



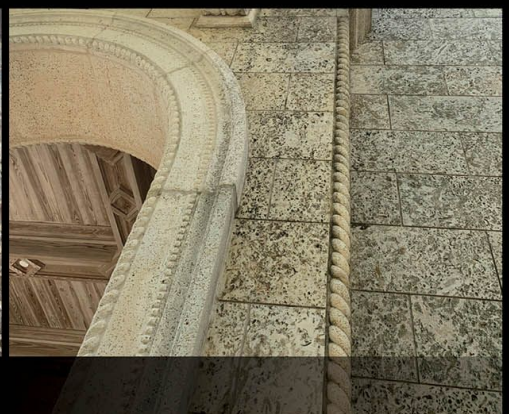
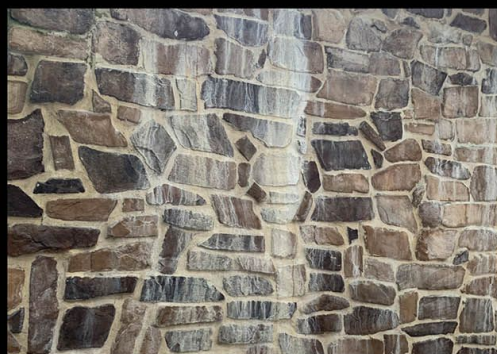
Steps & Stairs



Pool Decks, Patios & Fountains



Driveways & Walkways



Verticals

AN OUNCE OF PREVENTION IS WORTH A POUND OF CURE

+1(239)264-9439 - info@stella-systems.com - www.stella-systems.com

My driveway, porch, pool deck, and walkways have never looked so good. I would recommend these products. - Greg

RESTORATION

ROOFS

LEAKS



MOLD



RUST



EFFLORESCENCE



AN OUNCE OF PREVENTION IS WORTH A POUND OF CURE
+1(239)264-9439 - info@stella-systems.com - www.stella-systems.com

RESTORATION

WINDOWS & DOORS



SETTLING ISSUES

As a house ages, homeowners can expect some normal wear and tear, including some minor settling. When this happens, you may notice hairline cracks over doors and windows. It needs to be taking care of by opening the crack little more and use UV proof caulking.

CAULKING ISSUES

The quality of caulking and proper method of installation are essentials to have no water penetration around windows and doors.



FRAME ISSUES

The glue that's used on window frame sometimes it gets damaged by UV, salt and rain. It should be inspected yearly and caulked in these locations.

WATERPROOFING ISSUES

Waterproofing materials and method of application is essential.



AN OUNCE OF PREVENTION IS WORTH A POUND OF CURE

+1(239)264-9439 - info@stella-systems.com - www.stella-systems.com

Stella Systems has been one of the finest Stone Restoration companies I have used with my projects. - Bruce Saba, WB Saba Construction

RESTORATION

BALCONIES

LEAKS



When waterproofing elevated pool it's recommended to use rubber waterproofing that allows 1/4" cracks before leaking starts.

MOLD



when outdoor hard surfaces such as cementitious products or natural stone absorb water, surface become wet with mold seeds in the air settled and start growing green then brown then black. To avoid that we use water based penetrating sealer to make surfaces less porous to prevent mold growth.

RUST



EFFLORESCENCE



AN OUNCE OF PREVENTION IS WORTH A POUND OF CURE

+1(239)264-9439 - info@stella-systems.com - www.stella-systems.com

RESTORATION

BALCONIES

RAIL



When installing rails, we recommend using stanching with waterproofing.

INSTALLATION



Low spots on balconies before or after stone or tile installation causes water to stay and results in mold growth.

GUTTER LEAK



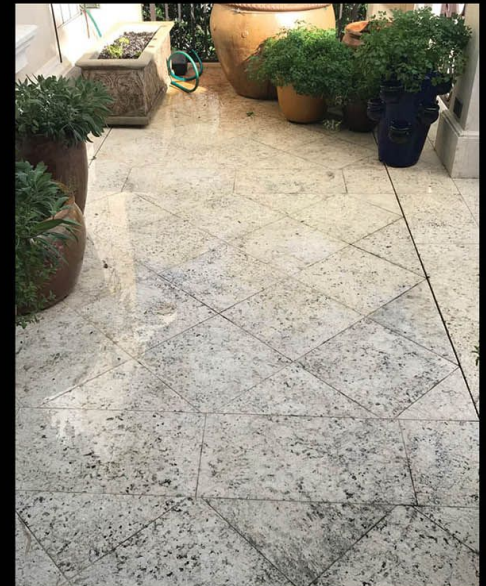
Gutter leak usually happens at ends and corners. Best way to prevent this issue is by waterproofing these two areas with CIM or Kemper.

GROUT ISSUES



Grout tends to crack when its installed thin.

LOW MAINTENANCE



Low or no maintenance cause mold growth.

AN OUNCE OF PREVENTION IS WORTH A POUND OF CURE

+1(239)264-9439 - info@stella-systems.com - www.stella-systems.com

RESTORATION

STEPS & STAIRS

EFFLORESCENCE



RUST



MOLD



LEAF STAIN

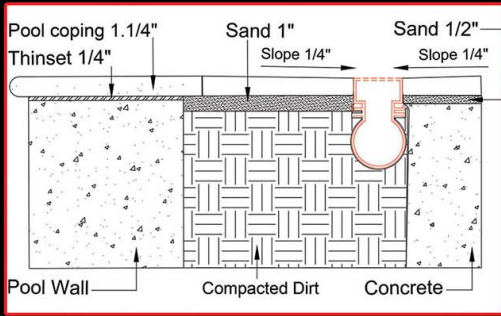


AN OUNCE OF PREVENTION IS WORTH A POUND OF CURE

+1(239)264-9439 - info@stella-systems.com - www.stella-systems.com

RESTORATION

POOL DECKS, PATIOS & FOUNTAINS



EFFLORESCENCE



To block efflorescence is good to use high quality rubber waterproofing over poured concrete or concrete blocks before installing glass tile.

MOLD



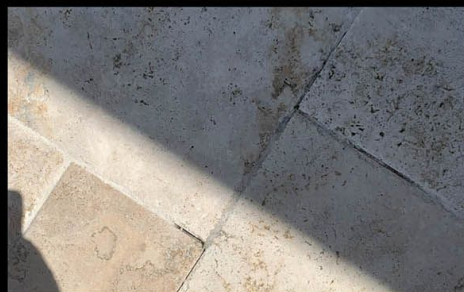
Sand set installation method results.

FLOWER POTS STAIN



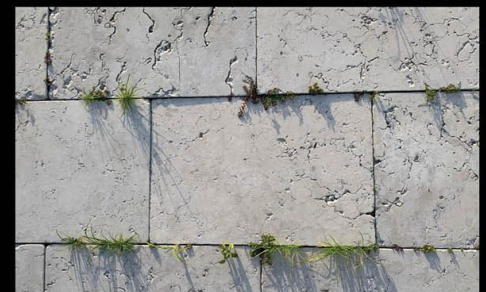
Florida dirt has iron deposits, when watering plants cause iron to rust.

GROUT ISSUES



Grout cracks when installed thin.

WEED GROWTH



Sand set installation causes weed growth

AN OUNCE OF PREVENTION IS WORTH A POUND OF CURE

+1(239)264-9439 - info@stella-systems.com - www.stella-systems.com

RESTORATION

POOL DECKS, PATIOS & FOUNTAINS

OUTDOOR FURNITURE STAIN



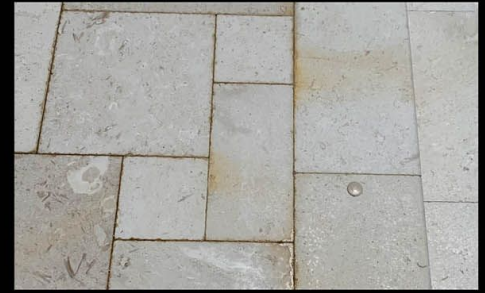
Rust comes from steel screws or frames.

TREE STAIN



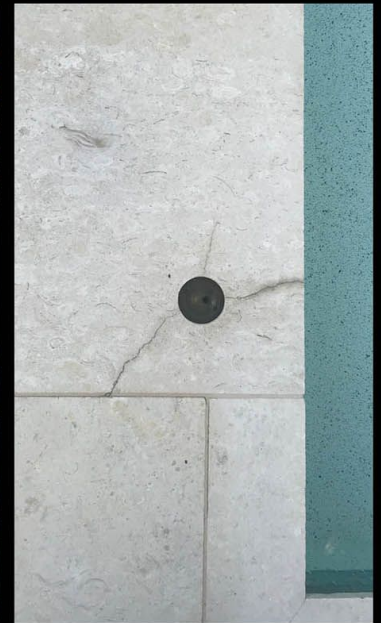
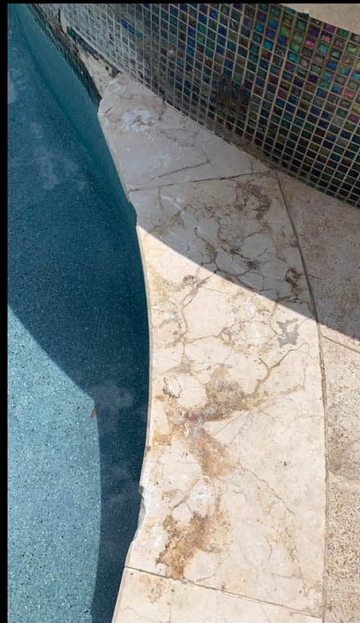
Tonic acid from tree debris or leaves causes stain.

RUST



Sand set installation using sand contains iron deposits causes rust stain.

DAMAGE



- Not every stone can be used anywhere
- Some soft stone deteriorate by pool chemicals.
- Natural stone has soft and hard parts in it and each react different to weather.
- Installation of other items such as lights and railing

AN OUNCE OF PREVENTION IS WORTH A POUND OF CURE

+1(239)264-9439 - info@stella-systems.com - www.stella-systems.com

RESTORATION

DRIVEWAYS & WALKWAYS

GROUT ISSUES



Grout can be done with minimum joints 1/16" and must use non-sanded and very thin paste to go all the way through.

DAMAGE



Using thin stone on driveways and walkways it bring cracks and damage in future. We recommend to choose the suitable stone thick depending on the stone type.

DRAIN ISSUES



EFFLORESCENCE



Using topping or coat sealer over stone or cementitious products such as pavers, so it can not breath out so you will see efflorescence between face and sealer. We use penetrating sealer instead.

IRRIGATION WATER



Florida water has abundant iron in it, and when used with irrigation systems, it creates stains on outdoor stone finishes.

LEAF STAIN



When tree leaf dies it produces tonic acid which burn stone with stain

AN OUNCE OF PREVENTION IS WORTH A POUND OF CURE

+1(239)264-9439 - info@stella-systems.com - www.stella-systems.com

RESTORATION

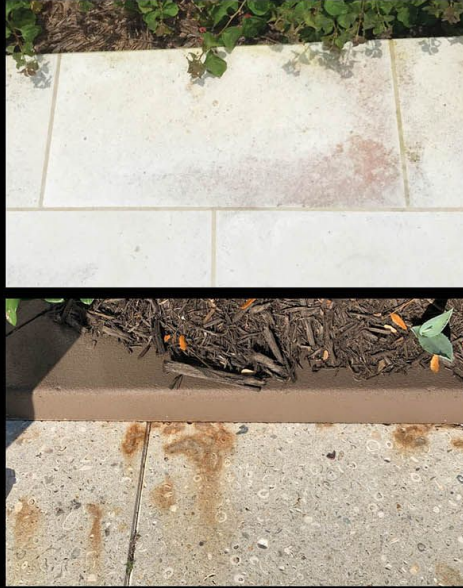
DRIVEWAYS & WALKWAYS

OIL STAIN



Oil stains from cars, lift machines and trucks. Penetrating sealer is recommended to reduce the issue.

MULCH STAIN



Mulch have dye and stain stone when rain.

RUST



MOLD



SETTLING



Limerock recommended to be used with Base Stabilizer to prevent or fix these issues.

AN OUNCE OF PREVENTION IS WORTH A POUND OF CURE

+1(239)264-9439 - info@stella-systems.com - www.stella-systems.com

RESTORATION

VERTICALS

EFFLORESCENCE



CRACKED EPOXY



Epoxy cracking.

CAULKING ISSUES



GROUT ISSUES



MULCH STAIN



Mulch have dye and stain stone when rain.

AN OUNCE OF PREVENTION IS WORTH A POUND OF CURE

+1(239)264-9439 - info@stella-systems.com - www.stella-systems.com

RESTORATION

VERTICALS

MOLD



RUST



Stainless steel 316 pins and screws recommended.

WATERPROOFING ISSUES



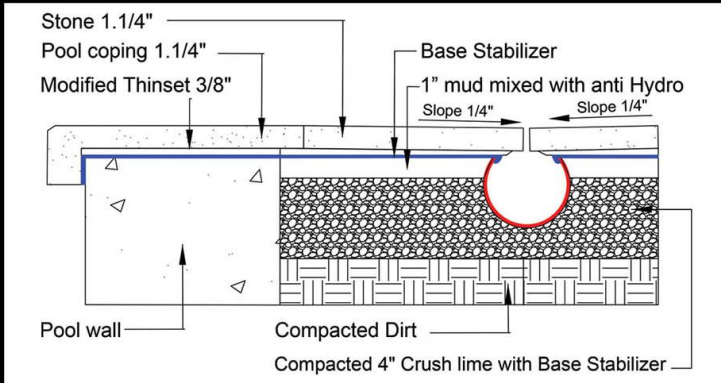
Stucco cracking.

DAMAGE



PREVENTION

STABLE-SET INSTALLATION METHOD



1- Remove 8" of dirt for pool deck installation (12" if driveway).



2- Dump and screed 4" of lime-rock for pool deck installation (8" if driveway).



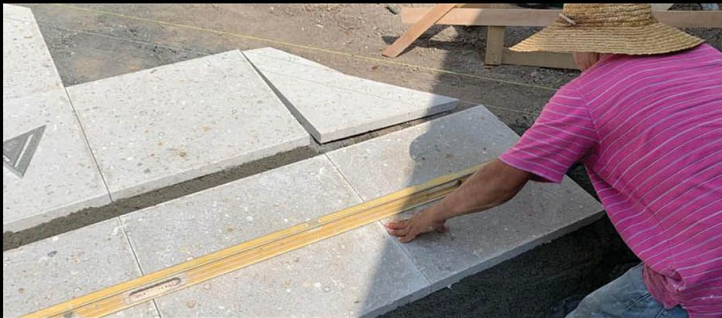
3- Spray Base Stabilizer and rake to go deeper.



4- Compact after 15 minutes.



5- Mix Portland cement with sand and Anti Hydro and spread 2" thick.



6- If using regular small concrete pavers, lay them down then compact as you go;
If using large format of concrete pavers or natural stone, apply thin-set to the backside of the pavers before laying and compacting them.



7- Grout if desired or required.
8- Seal with penetrating water base Stone Sealer 70.

Application
Video
Scan Here:



AN OUNCE OF PREVENTION IS WORTH A POUND OF CURE

+1(239)264-9439 - info@stella-systems.com - www.stella-systems.com

MAINTENANCE

MAINTENANCE PROGRAM:

We usually inspect all weak parts of the exterior of the house.

We do the following:

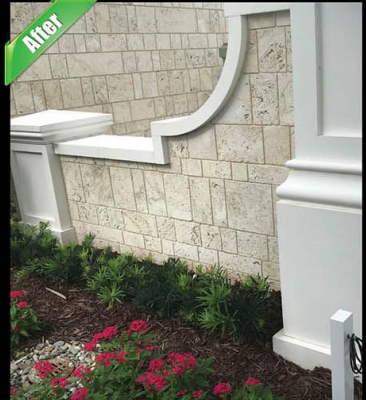
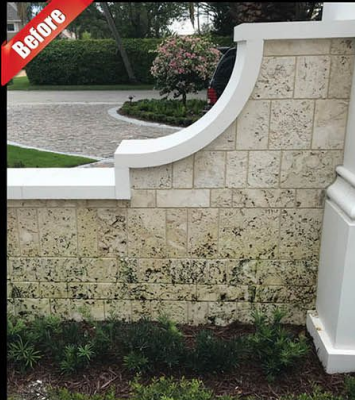
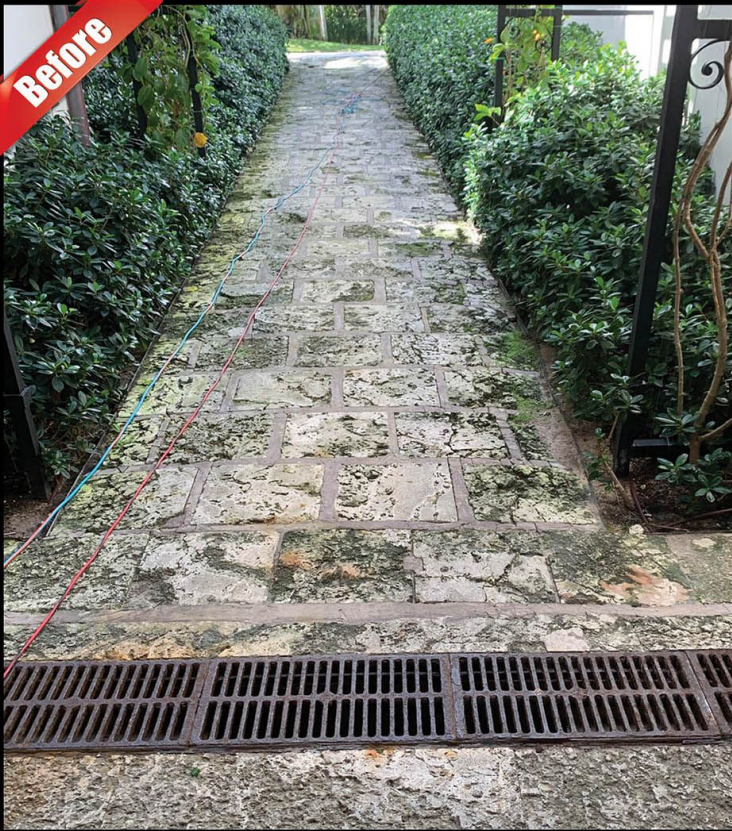
- Check All windows caulking and make sure it's good and solid, and fix them.
- Mold and mildew growth clean and seal the area.
- stone cracks
- inspect all hard surfaces and fix what's wrong



AN OUNCE OF PREVENTION IS WORTH A POUND OF CURE

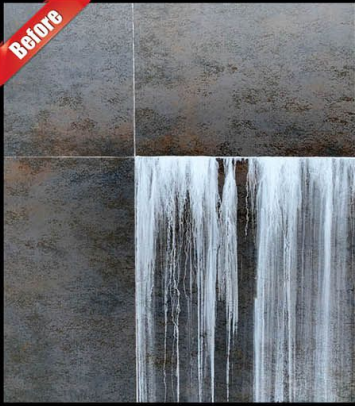
+1(239)264-9439 - info@stella-systems.com - www.stella-systems.com

MAINTENANCE



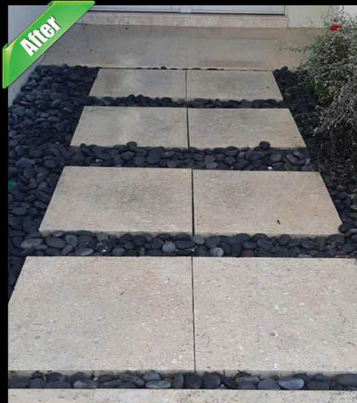
AN OUNCE OF PREVENTION IS WORTH A POUND OF CURE
+1(239)264-9439 - info@stella-systems.com - www.stella-systems.com

MAINTENANCE



AN OUNCE OF PREVENTION IS WORTH A POUND OF CURE
+1(239)264-9439 - info@stella-systems.com - www.stella-systems.com

MAINTENANCE



AN OUNCE OF PREVENTION IS WORTH A POUND OF CURE
+1(239)264-9439 - info@stella-systems.com - www.stella-systems.com



CEU Credit

We provide Restoration and Prevention services to all exterior hard surfaces including:

- Rooftop: we clean and seal all kinds of roofs; shingle, concrete roof tile, terra cotta, slate and flat roofs.
- Windows and doors caulking: after two or three years caulking start drying and detaching from around windows and doors frames so we remove and replace.
- Balconies and elevated pools: we clean, fix and seal all issues related to that.
- Steps and stairs: sometimes thin stone used on steps cracks and also there's almost always efflorescence due not to waterproof before stone install.
- Pool decks: ground floors and second floors including fixing broken or cracked stone, mold, efflorescence and stains.
- Driveways: we fix, clean and seal concrete and natural stone pavers.
- Verticals: we clean, fix and seal rusted spots, cracked stone or stucco.

We pride ourselves in providing the very best services to homes across Florida.

6915 15th Street East Ste 201, Sarasota, FL 34243

"AN OUNCE OF PREVENTION IS WORTH A POUND OF CURE"

+1(239)264-9439 - info@stella-systems.com - www.stella-systems.com